

SLE

TRAVELING EXHIBITION
PRESENTED BY SOUS LES ETOILES LLC



MISSISSIPPI DELTA

MAGDALENA SOLÉ

A PHOTOGRAPHIC
JOURNEY THROUGH THE DEEP SOUTH



MISSISSIPPI DELTA MAGDALENA SOLÉ
A PHOTOGRAPHIC JOURNEY THROUGH THE DEEP SOUTH



Mississippi Delta: *A Photographic Journey Through the Deep South* is an exploration of the iconic region lying between the Mississippi and Yazoo Rivers, running from Memphis, TN to Vicksburg, MS, a place that evokes visions of sharecroppers, plantations and, of course, the sound of the Blues. A small wealthy gentry and a large impoverished underclass live in dilapidated houses and tilting trailers.

In this series Magdalena Solé tells the story of people who make do with little. She shows their lives with dignity; though a sense of lethargy prevails, the vast beauty that characterizes the South is palpable. There is hardship here, and a resigned acceptance of one's lot in life, but there is also warmth: stories, guitar riffs, and jukebox melodies heard late into the night.

Most recently *Mississippi Delta* was selected as a PDN Photo Annual 2011 Finalist and exhibited at Southeast Museum of Photography in Daytona Beach, FL. Magdalena Solé is also winner of the Silver Prize 2011 at Slow Exposures, Concord, GA.



MISSISSIPPI DELTA MAGDALENA SOLÉ
A PHOTOGRAPHIC JOURNEY THROUGH THE DEEP SOUTH



Magdalena Solé is a social documentary photographer known for her sensitive expressions of culture through distinctive color artistry. The tonality in her images maps the experience of her work. Whether richly saturated or timeworn, Solé uses color to encapsulate a range of feelings.

Her work is about communities at the edge of society; her photographs describe brief moments of human existence, carried by the rhythm of a setting. They convey what is at once simple and vast, passing and constant, ordinary and intangible. Solé elaborates: “What inspires my pictures is light and the hidden spaces it illuminates, especially in immigrant and working class communities. Places where beauty is found in displaced spirits and peeling paint.”

Her projects span the globe. Recent work includes *Kamagasaki*, a photo documentary on the shunned elderly day laborers of Japan; *Cuba*, communities on the brink of change; and *Tohoku When The Water Receded*, an exploration of the aftermath of the 2011 Tohoku disaster. Born in Spain and raised in Switzerland, Magdalena Solé has lived in New York City since 1986, and holds a MFA from Columbia University.



MISSISSIPPI DELTA MAGDALENA SOLÉ

A PHOTOGRAPHIC JOURNEY THROUGH THE DEEP SOUTH



Select Exhibitions

Retrospective, Leica Store Gallery Soho, NYC
 Mississippi Delta, South East Museum of Photography, FL
 A Gathering of Images, Leica Gallery, NYC
 Voices from Japan, Colorado College IDEA Gallery, CO
 The Delta, Cassidy Bayou Art Gallery, Sumner, MS
 Mississippi Delta, Leica Gallery, NYC

Mississippi Delta, Sous Les Etoiles Gallery, NYC
 The Delta, Wiljax Gallery, Cleveland, MS
 Voices from Japan, Cathedral Church of St. John the Divine, NYC
 Dante and the Delta, Doma Gallery, Charlotte, NC
 Southern Expressions, Clarksdale Courthouse, MS
 After the Water Receded, Sidney Mishkin Gallery, NYC

Center Forward, Denver International Airport, CO
 Center Forward, The Center for Fine Art Photography, CO
 Human + Being, The Center for Fine Art Photography, CO
 Blue, The Center for Fine Art Photography, CO
 Slow Exposures, Zebulon, GA
 Delta Landscapes, Zhengzhou Fine Art Museum, China
 Latent, Umbrella Arts Gallery, NYC

Awards

Mississippi Delta, PDN Photo Annual 2011 Finalist
 Silver Prize, Slow Exposures, Concord, GA
 New Delta Rising (University Press of Mississippi),
 Silver Award, PX3 Prix de la Photographie, France



MISSISSIPPI DELTA MAGDALENA SOLÉ
A PHOTOGRAPHIC JOURNEY THROUGH THE DEEP SOUTH

EXHIBITION AT-A-GLANCE

PARTICIPATION FEE Price Upon Request

REQUIRED SECURITY Light

VENUE SIZE Small to moderate

RUNNING LENGTH 107.5' (frames only)

AVAILABLE ARTWORKS 48 framed color archival pigment prints, Multimedia video

OTHER MATERIALS Wall layouts and texts, packing instructions, final checklist

BOOKING PERIOD 10 weeks (8 & 12 week prorated)

TRAVELING DATES Please inquire

HARDCOVER ART BOOK New Delta Rising, published by University of Mississippi

LECTURE/EVENT/WORKSHOP Artist is available

CONTACT Corinne Tapia, Director
212.966.0796
corinne@souslesetoiles.net





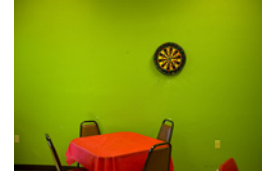
MISSISSIPPI DELTA MAGDALENA SOLÉ
A PHOTOGRAPHIC JOURNEY THROUGH THE DEEP SOUTH



Girl Dancing,
Baptist Town, Greenwood
2010
24 x 36" image size
34 x 46" framed



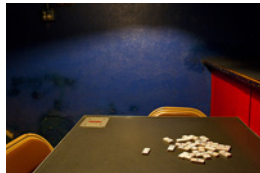
4th Street and Issaquena,
Clarksdale
2010
24 x 36" image size
34 x 46" framed



Two Brothers' Wangz 'n' Thangz,
Clarksdale
2010
24 x 36" image size
34 x 46" framed



Blue Car and Teens,
Crowder
2010
14 x 21" image size
20 x 28" framed



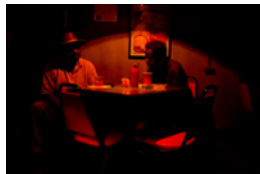
Domino at Messengers,
Clarksdale
2010
14 x 21" image size
20 x 28" framed



June at Hot Spot,
Jonestown
2010
14 x 21" image size
20 x 28" framed



Girl with Pool Stick,
Clarksdale
2010
14 x 21" image size
20 x 28" framed



We J's Bar,
Clarksdale
2010
14 x 21" image size
20 x 28" framed



Mississippi River,
Terrapin Neck Cut-off, Vicksburg
2010
14 x 21" image size
20 x 28" framed



Boys,
Coahoma
2010
14 x 21" image size
20 x 28" framed



Blue Shoes,
Clarksdale
2010
14 x 21" image size
20 x 28" framed



Uncle with Baby,
Crowder
2010
14 x 21" image size
20 x 28" framed



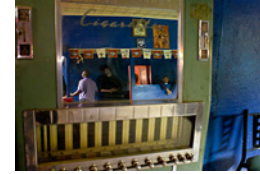
MISSISSIPPI DELTA MAGDALENA SOLÉ
A PHOTOGRAPHIC JOURNEY THROUGH THE DEEP SOUTH



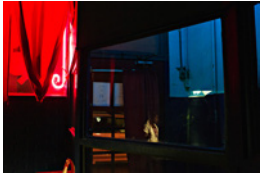
Field Burning Near Eagle Lake,
Warren County
2010
14 x 21" image size
20 x 28" framed



Nana at her Store,
Winstonville
2010
14 x 21" image size
20 x 28" framed



Cigarette Machine,
Clarksdale
2010
14 x 21" image size
20 x 28" framed



Jazz at Messengers,
Clarksdale
2010
14 x 21" image size
20 x 28" framed



Po' Monkey's Lounge,
Merigold
2010
14 x 21" image size
20 x 28" framed



Coat in Waiting,
Crowder
2010
14 x 21" image size
20 x 28" framed



Master Rock at Hot Spot,
Jonestown
2010
14 x 21" image size
20 x 28" framed



Trailer,
Stovall
2012
14 x 21" image size
20 x 28" framed



Gas Station,
Jonestown
2010
14 x 21" image size
20 x 28" framed



Madison Raymond,
Crowder
2010
14 x 21" image size
20 x 28" framed



Girl in Mirror,
Greenwood
2010
14 x 21" image size
20 x 28" framed



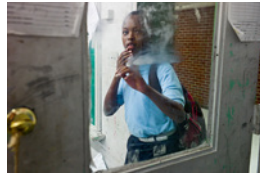
Boys with Bicycle and Dog,
Crowder
2010
14 x 21" image size
20 x 28" framed



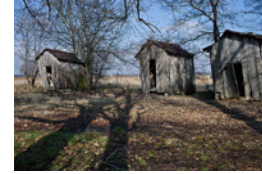
MISSISSIPPI DELTA MAGDALENA SOLÉ
A PHOTOGRAPHIC JOURNEY THROUGH THE DEEP SOUTH



Amish Home,
Near Dublin
2010
14 x 21" image size
20 x 28" framed



Girl Entering Class Room,
Clarksdale
2010
14 x 21" image size
20 x 28" framed



Cotton Houses Along Highway 3,
Near Tutwiler
2010
14 x 21" image size
20 x 28" framed



Parking Lot,
Clarksdale
2010
14 x 21" image size
20 x 28" framed



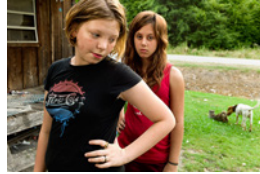
Trees in the Rain,
Rosedale
2010
14 x 21" image size
20 x 28" framed



Blue Bandana,
Webb
2012
14 x 21" image size
20 x 28" framed



Dog Waking Up,
Coahoma
2010
10 x 15" image size
16 x 22" framed



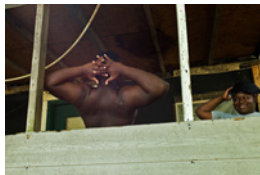
Girls with Cat and Dog,
Lambert
2010
10 x 15" image size
16 x 22" framed



Red Truck,
Lambert
2010
10 x 15" image size
16 x 22" framed



Hot Afternoon, Willow Island,
Mississippi River
2010
10 x 15" image size
16 x 22" framed



Brother and Sister on Porch,
Belen
2010
10 x 15" image size
16 x 22" framed



Abandoned House,
Crowder
2010
10 x 15" image size
16 x 22" framed



MISSISSIPPI DELTA MAGDALENA SOLÉ
A PHOTOGRAPHIC JOURNEY THROUGH THE DEEP SOUTH



Boys Dreaming,
Belen
2010
10 x 15" image size
16 x 22" framed



Game of Dice,
Firars Point
2010
10 x 15" image size
16 x 22" framed



Corner Store,
Clarksdale
2010
10 x 15" image size
16 x 22" framed



Sweeping Porch,
Tutwiler
2010
10 x 15" image size
16 x 22" framed



Old House with Dog,
Lambert
2010
10 x 15" image size
16 x 22" framed



Blackbirds,
Highway 1
2010
10 x 15" image size
16 x 22" framed



Mother and Daughter,
Greenwood
2010
10 x 15" image size
16 x 22" framed



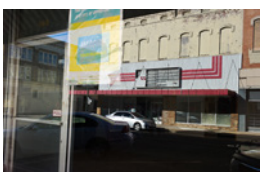
Ground Zero,
Clarksdale
2010
10 x 15" image size
16 x 22" framed



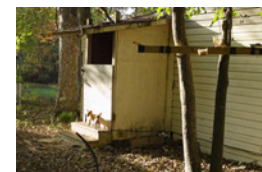
Family on Porch,
Lambert
2010
10 x 15" image size
16 x 22" framed



Amish Chicken Coop,
Dublin
2010
10 x 15" image size
16 x 22" framed



Main Street,
Helena, AR
2012
10 x 15" image size
16 x 22" framed



Twin Dogs,
Floyd Island
2012
10 x 15" image size
16 x 22" framed



MISSISSIPPI DELTA MAGDALENA SOLÉ
A PHOTOGRAPHIC JOURNEY THROUGH THE DEEP SOUTH

Sous Les Etoiles LLC (SLE) Traveling Exhibitions supports unique visual storytelling in public spaces as well as corporate and museum collections, and promotes contemporary photography and photo-based fine art from a distinguished roster of award-winning, internationally recognized photographers. Most recently, SLE partnered with the New York Photo Festival to present TOKYO-GA, an exhibition dedicated to the city of Tokyo, and with the Miami International Airport's Division of Fine Arts & Cultural Affairs to present the series *Fake Holidays* by photographer Reiner Riedler, on view in the airport's Concourse F.

SLE founder Corinne Tapia has more than a 20-year history as a photography curator, consultant and collector. A member of the TOKYO-GA commissioner's board in Japan, Ms. Tapia spearheads the selection committee for the 2016 Tokyo Museum of Photography exhibition. She also collaborates in portfolio reviews with FotoFest (Houston), ICP (New York), and Les Rencontres d'Arles (France).

In addition to its Traveling Exhibitions program, Sous Les Etoiles annually curates six exhibitions in Soho's historic photo building at 560 Broadway in New York. Recent press coverage for the gallery's exhibitions includes The Wall Street Journal, CNN, The New Yorker, Le Journal de la Photographie and New York Photo Review.